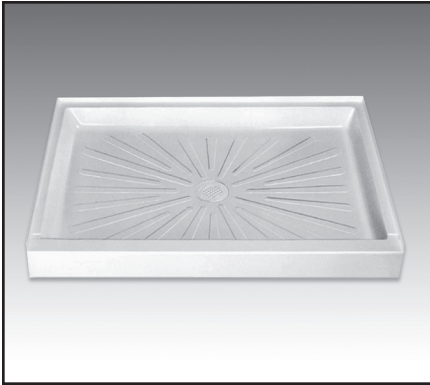




# MUSTEE

## DURABASE® Fiberglass Shower Floors Rectangular, Single Threshold, 36" Series



### Design features:

- Sturdy, 1-piece molded fiberglass construction – structural underbody for strength, slip resistant Starburst® surface
- Integral molded drain with seal for connection to 2" Sch. #40 ABS, PVC or iron DWV sanitary drain pipe. See optional drain seals for 1-1/2" pipe and 2" copper – removable strainer
- Available in White
- Semi-gloss surface – resistant to mold and mildew, easy to clean
- Designed to be used with Mustee's DURAWALL® shower walls, ceramic tile or preformed wall kit

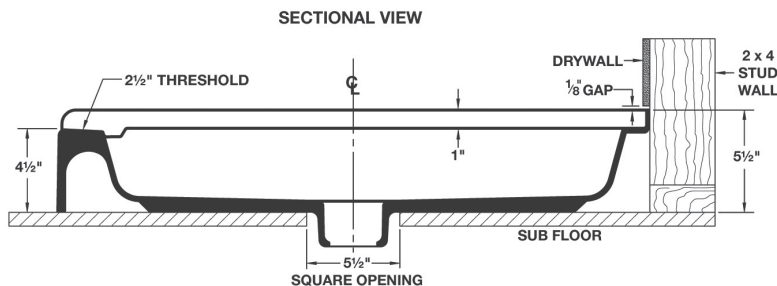
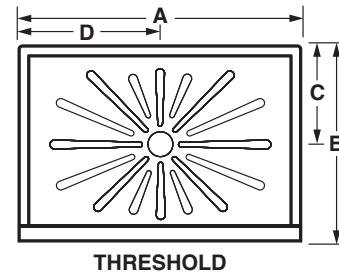
### Code Accepted

- International Association of Plumbing and Mechanical Officials® (IAPMO®)
- Warnock Hersey® (Canada) Listed – CSA test standards Shower Floor
- American National Standards Institute (ANSI) – Specification ANSI Z 124-2017
- American Society of Testing and Materials (ASTM) – E-84
- CAN/ULC S102-07 Burn and Smoke Test

### Specifications

Model	Nom. Size	Color	UPC	A	B	C	D
3642M	36" x 42"	White	6 71031 00519 9	42"	36"	18"	21"
3648M	36" x 48"	White	6 71031 00505 2	48"	36"	18"	24"
3660M	36" x 60"	White	6 71031 00506 9	60"	36"	18"	30"

**General:** Furnish and install as shown on plans. DURABASE® rectangular, single threshold shower floor model \_\_\_\_\_ as manufactured by E.L. Mustee & Sons, Inc. Floor to be one-piece, molded fiberglass, made with matched metal molds. Surface to be slip-resistant Starburst® design that does not interfere with the flow of water. Size \_\_\_\_" x \_\_\_\_". Shoulder will be no less than 3" high or less than 1" wide. Tiling flange will extend not less than 1" higher than the threshold which provides an integral molded water barrier. Threshold will be not less than 4-1/2" high. Molded-in drain and drain seal for installation of 2" iron DWV (Sch. 40) PVC or ABS sanitary drain pipe. Removable strainer. Shall meet ANSI Z 124-2017. Color: White.



# MUSTEE

E.L. Mustee & Sons, Inc. • 5431 West 164th Street • Brook Park, OH 44142 • Phone: 216.267.3100 • Fax: 216.267.9997  
E-mail: info@mustee.com • Web: www.mustee.com • Proudly made in the USA

Notice: Our continuous commitment to product improvement may result in changes to product specifications without notice.  
Made and Printed in U.S.A.



# MUSTEE

## DURABASE® Fiberglass Shower Floor Accessories for 36" Series

### **247 DURAWALL®** — DELUXE THERMOPLASTIC 5-PANEL RECTANGULAR SHOWER WALLS, ADHESIVE MOUNT



<b>Model No.</b>	<b>Color</b>	<b>UPC</b>	<b>Fits DURABASE®</b>
247WHT	White	6 71031 00048 4	3642M, 3648M

### **260 DURAWALL®** — DELUXE THERMOPLASTIC 5-PANEL RECTANGULAR SHOWER WALLS, ADHESIVE MOUNT



<b>Model No.</b>	<b>Color</b>	<b>UPC</b>	<b>Fits DURABASE®</b>
260WHT	White	6 71031 00053 8	3642M, 3648M, 3660M

### **265 DURAWALL®** — DELUXE THERMOPLASTIC 5-PANEL RECTANGULAR SHOWER WALLS, ADHESIVE MOUNT



<b>Model No.</b>	<b>Color</b>	<b>UPC</b>	<b>Fits DURABASE®</b>
265WHT	White	6 71031 00478 9	3642M, 3648M, 3660M



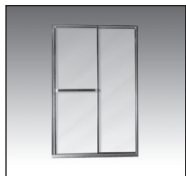
# MUSTEE

E.L. Mustee & Sons, Inc. • 5431 West 164th Street • Brook Park, OH 44142 • Phone: 216.267.3100 • Fax: 216.267.9997  
 E-mail: [info@mustee.com](mailto:info@mustee.com) • Web: [www.mustee.com](http://www.mustee.com) • Proudly made in the USA

Notice: Our continuous commitment to product improvement may result in changes to product specifications without notice.  
 Patents pending. Made and Printed in U.S.A.



### STYLEMATE® — BY-PASS FRAMED AND BY-PASS FRAMELESS ENCLOSURES



Model No.	Finish	Glass	UPC (for enclosure)	Fits DURABASE®
<b>Framed Design</b>				
48.403	Chrome	Clear	6 71031 00466 6	3648M
48.404	Brushed Nickel	Clear	6 71031 00467 3	3648M
60.403	Chrome	Clear	6 71031 00472 7	3660M
60.404	Brushed Nickel	Clear	6 71031 00473 4	3660M
<b>Frameless Design</b>				
48.407	Brushed Nickel	Clear	6 71031 00470 3	3648M
60.406	Chrome	Clear	6 71031 00475 8	3660M
60.407	Brushed Nickel	Clear	6 71031 00476 5	3660M

Mustee's DURABASE® Shower Floors are just the beginning of a beautiful shower space that can be created in virtually any location. The accessory products presented here will help you build the shower of your dreams, starting with Mustee's renown DURABASE® Shower Floors.

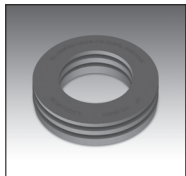
### GapSeal-Pro™ — FOR ALL SHOWER FLOORS AND BATHTUBS



Model No.	Description	UPC
60.320A	132" long x 2" tall	6 71031 00496 3

The flexible PVC GapSeal-Pro™ features a strong adhesive strip that allows it to be easily positioned to "extend" tile flange and effectively seal the gap between drywall or like-surfaces on shower floors or bathtubs. Patent pending.

### Drain Seals



Model No.	Description	UPC
32.404	Drain Seal for 2" copper pipe	6 71031 00313 3
32.405	Drain Seal for 1-1/2" ABS/PVC pipe	6 71031 00397 3

Designed to effectively seal the connection between DWV piping and the molded-in drain for all DURABASE® shower floors.

### Strainers



Model No.	Description	UPC
34.301	Strainer – Stainless steel	6 71031 00532 8
42.322	Strainer – Molded plastic - White	6 71031 00533 5
42.323	Strainer – Molded plastic - Bone	6 71031 00534 2
42.326	Strainer – Molded plastic - Chrome	6 71031 00493 2

Premium grade, removable strainers.

