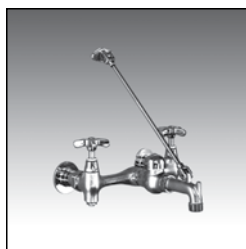


▶ Service Faucet



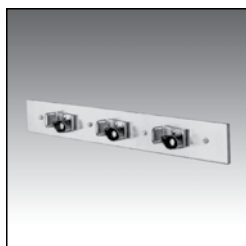
Model No.	UPC
63.600A	6 71031 00277 8
Heavy duty, chrome plated brass dual handle sink faucet with top reinforcing bar and pail hook on spout.	

▶ Hose and Hose Holder



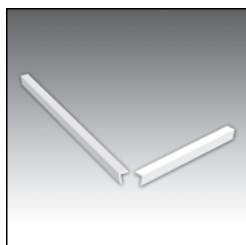
Model No.	UPC
65.700	6 71031 00196 2
Heavy duty 5/8" dia. reinforced 31" rubber hose with brass couplings on one end. Spring loaded, molded rubber hose holder mounts on stainless steel wall plate.	

▶ Mop Hanger



Model No.	UPC
65.600	6 71031 00195 5
Three spring-loaded rubber holders mounted to a 3" x 24" stainless steel wall plate. Click here for more information.	

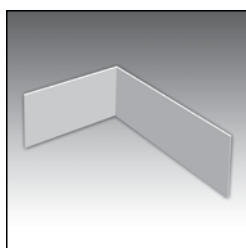
▶ Bumper Guards



Available in high impact resistant molded vinyl (3 versions) or stainless steel (2 versions).

Model No.	UPC
High Impact-resistant vinyl	
62.401 21-1/2" Long, Fits Model 62M	6 71031 00403 1
63.401 20-3/4" Long, Fits Model 63M & 65M	6 71031 00290 7
65.403 32-3/4" Long, Fits Model 65M	6 71031 00291 4
Stainless steel	
63.403 20-3/4" Long, Fits Model 63M & 65M	6 71031 00409 3
65.404 32-3/4" Long, Fits Model 65M	6 71031 00410 3

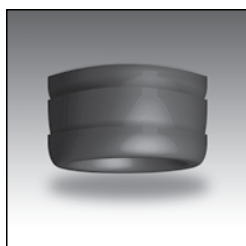
▶ DURAGUARD™ Wall Guards



Protects wall surfaces from splashing and damage from impacts, 12" height, 20 gauge #304 stainless steel.

Model No.	UPC
67.2424 Two panels & bracket for 24" x 24" corner	6 71031 00293 8
67.2436 Two panels & bracket for 24" x 36" corner	6 71031 00294 5
67.24C One panel & corner bracket	6 71031 00295 2
67.36C One panel & corner bracket	6 71031 00296 9

▶ Optional Seals



For installations with the following pipe connections:

Model No.	UPC
65.308 For 2" PVC, ABS and iron	6 71031 00303 4
65.309 For 3" PVC, ABS and iron, (Included w/mop basin)	6 71031 00304 1
65.311 For 3" soil pipe (No-Hub)	6 71031 00305 8