



**Design features:**

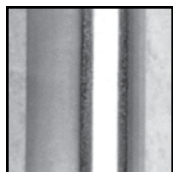
- Smooth stainless steel, 18 gauge tubing, satin finish, 1-1/2" diameter
- Exclusive, Twist-Lock concealed flange snaps into place for a secure, tamper-proof mounting
- Stainless steel mounting flange is Heliarc welded to the tube to form a single, high strength structural unit that cannot be separated
- All bars have a nominal offset distance of 1-1/2" (38mm)
- Flat contact surface won't cut or mar wall surfaces – bar remains stable without further tightening
- 304 Stainless steel mounting flange, 14 gauge
- Tested to withstand 500 lbs. of downward load...when properly installed

**Code Accepted**

CareGiver® Grab Bars meet or exceed performance requirements:

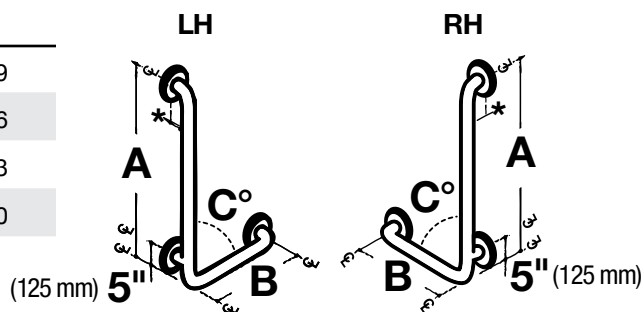
- American National Standards Institute (ANSI) A117.1
- Meets or exceeds HUD, FHA, VA, ADA and other Federal/local codes

**Specifications:**



Smooth finish

Model No.		AxB	C	UPC
390.308	LH	24" x 16"	90°	6 71031 00436 9
390.309	LH	32" x 16"	90°	6 71031 00437 6
390.310	RH	24" x 16"	90°	6 71031 00438 3
390.311	RH	32" x 16"	90°	6 71031 00439 0



**General:** Furnish and install as shown on plans, Angled Safety Grab Bar, as provided by E.L. Mustee & Sons, Inc. model \_\_\_\_\_ Grab Bar with \_\_\_\_\_ (RH, LH) measuring \_\_\_\_\_ x \_\_\_\_\_ with 90° angle with Twist-Lock concealed flange shall be 1-1/2" diameter, 18 gauge, type 304 stainless steel tubing. 14 gauge stainless steel mounting flange shall be Heliarc welded to the tube to form a single structural unit. Grab bar shall comply with applicable building codes. Meets ANSI A117.1

