

**Design features:**

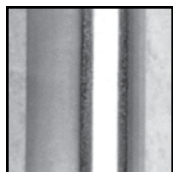
- Smooth stainless steel, 18 gauge tubing, satin finish, 1-1/2" diameter
- Exclusive, Twist-Lock concealed flange snaps into place for a secure, tamper-proof mounting
- Stainless steel mounting flange is Heliarc welded to the tube to form a single, high strength structural unit that cannot be separated
- All bars have a nominal offset distance of 1-1/2" (38mm)
- Flat contact surface won't cut or mar wall surfaces – bar remains stable without further tightening
- 304 Stainless steel mounting flange, 14 gauge
- Tested to withstand 500 lbs. of downward load...when properly installed

**Code Accepted**

CareGiver® Grab Bars meet or exceed performance requirements:

- American National Standards Institute (ANSI) A117.1
- Meets or exceeds HUD, FHA, VA, ADA and other Federal/local codes

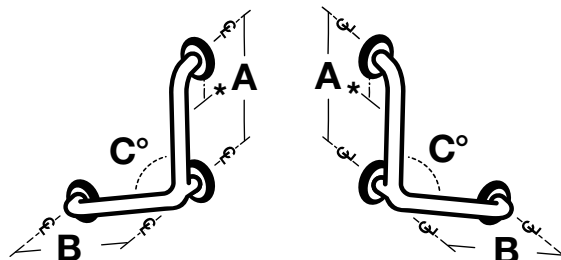
**Specifications:**



Smooth finish

Model No.	AxB	C	UPC
390.312	30" x 30"	90°	6 71031 00440 6
390.313	12" x 12"	120°	6 71031 00441 3
390.314	16" x 16"	120°	6 71031 00442 0
390.315	24" x 24"	120°	6 71031 00443 7

Rotate for RH or LH use.



**General:** Furnish and install as shown on plans, Angled Safety Grab Bar model\_\_\_\_, as provided by E.L. Mustee & Sons, Inc. with \_\_\_\_ (90°, 120°) angle measuring \_\_\_x\_\_\_ Twist-Lock concealed flange shall be 1-1/2" diameter, 18 gauge, type 304 stainless steel tubing. 14 gauge stainless steel mounting flange shall be Heliarc welded to the tube to form a single structural unit. Grab bar shall comply with applicable building codes. Meets ANSI A117.1

